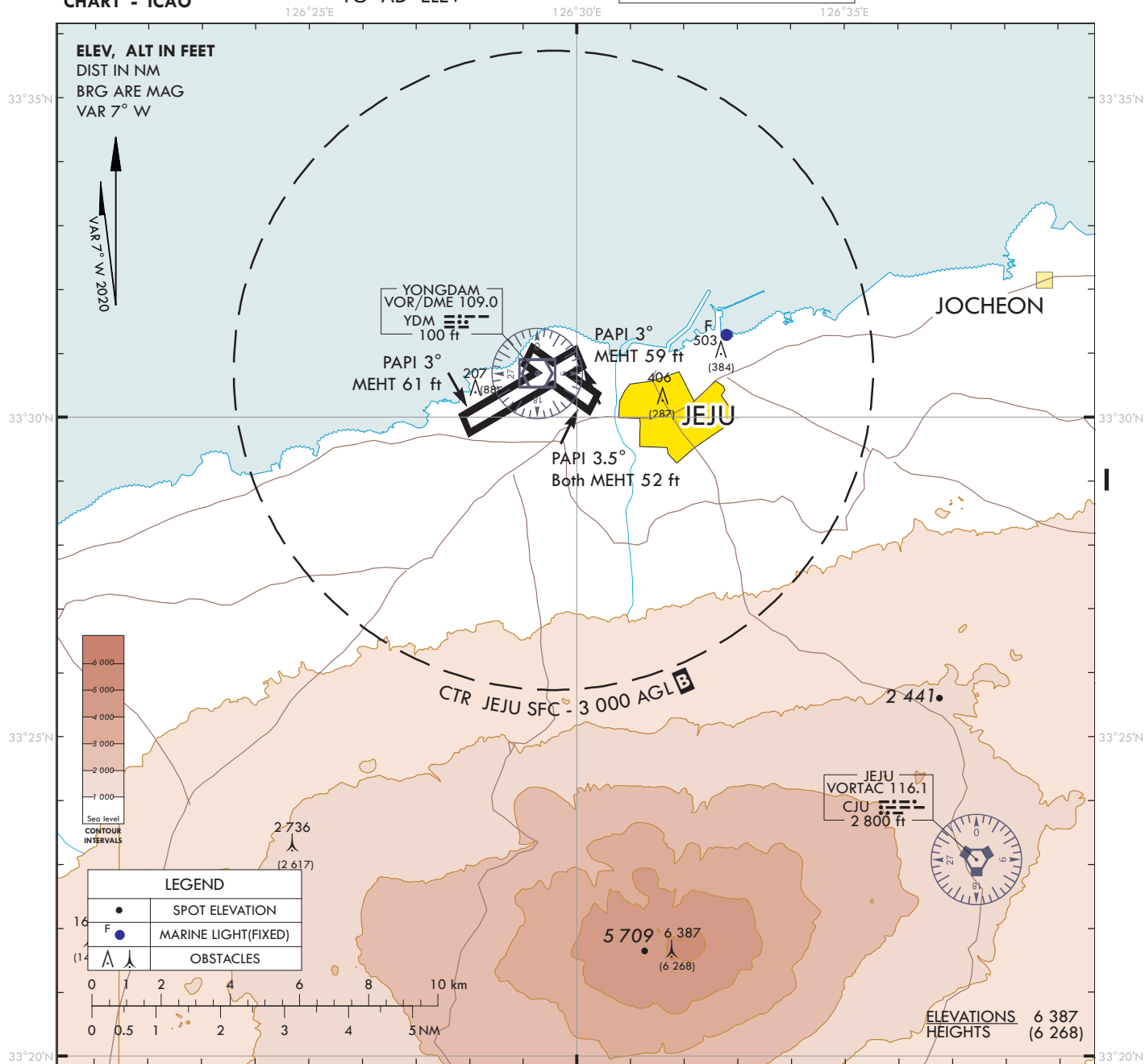


VISUAL
APPROACH
CHART - ICAO

AD ELEV 119 ft
HEIGHTS RELATED
TO AD ELEV

JEJU APP 121.2 124.05
DEP 119.225
TWR 118.2 118.55

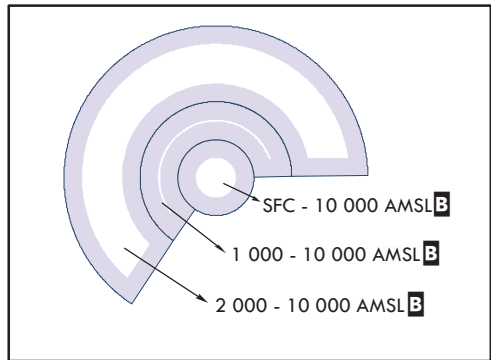
JEJU/Jeju Intl



VISUAL APPROACH PROCEDURE

1. Visual approach may be initiated by ATC or approved upon pilot request on traffic permitting basis when :
 - a. Ceiling : At or above 500 ft plus MVA
 - b. Visibility : Not less than 3 SM
 - c. Remark : When conducting visual approach RWY 07, all arriving aircraft shall align the final approach course outside YDM 6 DME for noise abatement.

2. ATS airspace : Class B(Refer to ENR 2.2.-1)



Change : Information of PAPI information.